



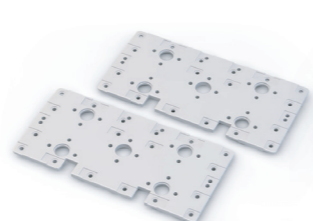
X5 DRS-0101
HerkuleX Servo



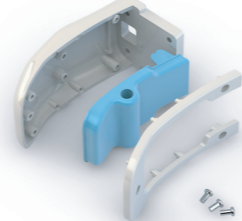
X3 DRS-0102
HerkuleX Servo



X2 DRS-0104
HerkuleX Servo



X2 DRB-0001(W)
Front / Back



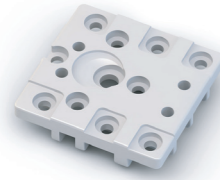
X2 DRB-0002(W)
Hand



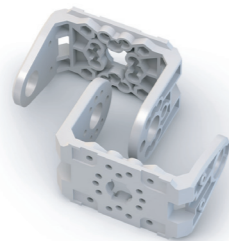
X1 DRM-G354
MID (Mobile Internet Device)



X1 DRT-HWW1
Head Module



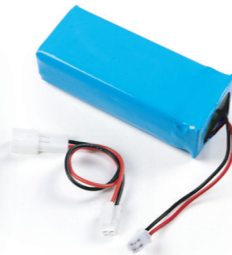
X4 DRB-0004(W)
Universal Plate



X5 DRB-0009(W)
U2-type Bracket



X1 DRC-005T(W)
Controller



X1 DRL-0728
7.4V Li-Po Battery
(3,000mAh)



X5 DRH-1001
Horn (Plastic)

1:1 SCALE

X5 DRA-0051
Nut (M2)

X10 DRA-0054
Bolt (PH/M 2.0X13)

X30 DRA-0056
Bolt (PH/M 2.0X4)

X34 DRA-0058
Bolt (PH/M 2.0X6)

X14 DRA-0061
Bolt (PH/M 3.0X6)

X20 DRA-0062
Bolt (PH/M 3.0X8)

X8 DRA-0063
Bolt (CH/T 2.0X4)

X110 DRA-0064
Bolt (PH/T 2.0X5)

X10 DRA-0065
Bolt (FH/T 2.0X8)

X6 DRA-0066
Bolt (FH/M 2.0X10)

X10 DRA-0067
Horn Bolt (BH/T 2.6X8)

X10 DRA-0069
Hand Bolt (CH/T 1.7X4)

X16 DRA-0070
Bolt (FWH/T 2.0X5)

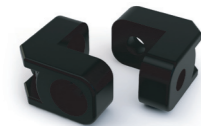
X16 DRA-0071
Bolt (RH/M 3.0X10)

X35 DRA-0073
Bolt (PH/T 2.0X4)

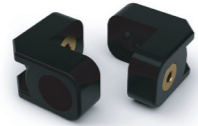
X10 DRA-0075
Looseproof Bolt
(PH/M 2.0X6)

X20 DRA-0076
Looseproof Bolt
(PH/M 3.0X8)

X6 DRA-0077
M3 Washer



X6 DRJ-0003
L-type Joint
(Hole only)



X28 DRJ-0001
L-type Joint
(Single Nut)



X4 DRJ-0007
L-type Joint
(16.0mm, Hole only)



X6 DRJ-0010
Harness Clamp



X5 DRJ-0011
Bushing Set



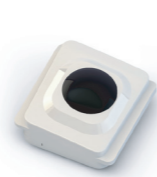
X1 DRQ-0001
AC Adaptor



X1 DRI-0002
Serial Cable
(DSUB 9Pin - 3P Audio Jack)



X1 DRI-0003
USB to Serial Gender



X1 DRI-0004(W)
IR Receiver



X1 DRI-0005
Remote Control



X2 DRA-0002
Harness (75mm)



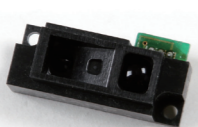
X8 DRA-0003
Harness (100mm)



X2 DRA-0004
Harness (130mm)



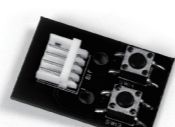
X5 DRI-0008
PSD Sensor



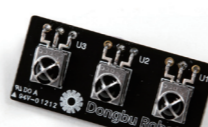
X3 DRI-0010
PSD Sensor



X1 DRI-0011
IR Distance Sensor



X2 DRI-0012
Tact Switch Module



X1 DRI-0013
IR Receiver PCB



X2 DRA-0008
Heavy Duty Harness (200mm)

1:1 SCALE



X3 DRA-0020
PSD Harness 3+4pin (130mm)



X5 DRA-0021
PSD Harness 3pin (200mm)



X1 DRA-0022
IR Harness 5pin (150mm)



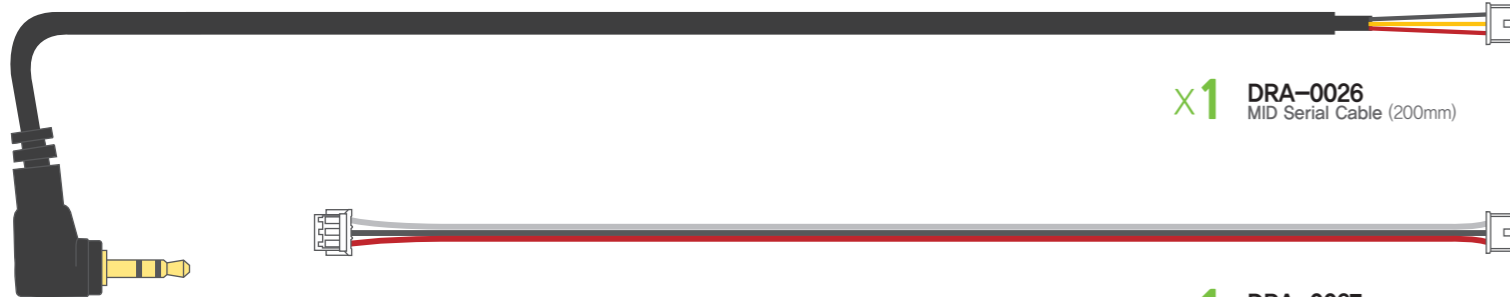
X1 DRA-0023
Power Connection



X1 DRA-0024
IR Distance Harness



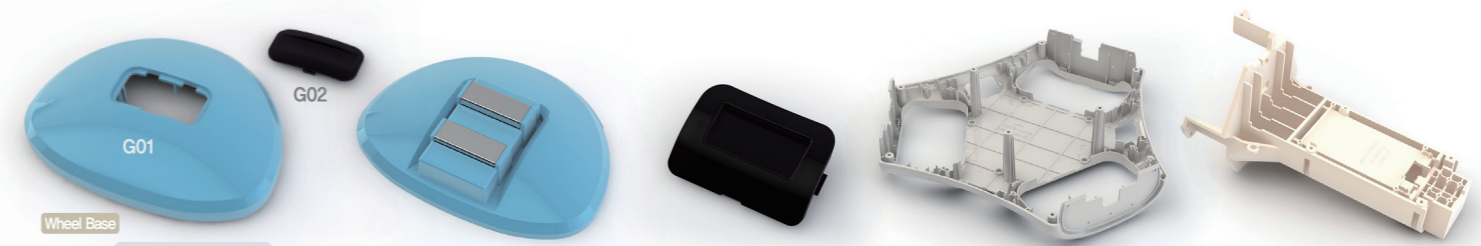
X1 DRA-0025
MID Serial Cable (130mm)



X1 DRA-0026
MID Serial Cable (200mm)



X1 DRA-0027
IR Receiver Harness 3pin (150mm)



Wheel Base
X2 G01 Carrier Wheel Cap
X2 G02 Carrier Wheel Cap PSD Lens
Wheel Base
X1 G03 Carrier Bottom Wheel Cap
Wheel Base
X3 G04 Carrier Side Lens
Wheel Base
X1 G05 Carrier Bottom Base
Wheel Base
X1 G06 Carrier Post



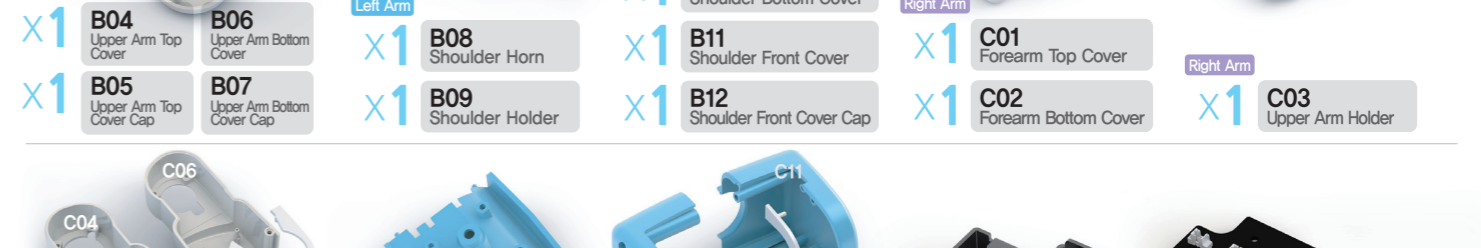
Wheel Base
X1 G07 OPSU Board
Wheel Base
X3 G08 Carrier PSD Bracket
Wheel Base
X3 G09 Wheel Bearing Housing
Wheel Base
X3 G10 Omni Wheel
Wheel Base
X1 G11 Carrier Base Plate



Wheel Base
X3 G12 Carrier Wheel Dust Cover
Wheel Base
X3 G13 Carrier Side PSD Window
Wheel Base
X1 G14 Carrier Top Cover Base
Left Arm
X1 B01 Forearm Top Cover
Left Arm
X1 B02 Forearm Bottom Cover
Left Arm
X1 B03 Upper Arm Holder



Left Arm
X1 B04 Upper Arm Top Cover
Left Arm
X1 B05 Upper Arm Top Cover Cap
Left Arm
X1 B06 Upper Arm Bottom Cover
Left Arm
X1 B07 Upper Arm Bottom Cover Cap
Left Arm
X1 B08 Shoulder Horn
Left Arm
X1 B09 Shoulder Holder
Left Arm
X1 B10 Shoulder Bottom Cover
Left Arm
X1 B11 Shoulder Front Cover
Left Arm
X1 B12 Shoulder Front Cover Cap



Right Arm
X1 C01 Forearm Top Cover
Right Arm
X1 C02 Forearm Bottom Cover
Right Arm
X1 C03 Upper Arm Holder
Right Arm
X1 C04 Upper Arm Top Cover
Right Arm
X1 C05 Upper Arm Top Cover Cap
Right Arm
X1 C06 Upper Arm Bottom Cover
Right Arm
X1 C07 Upper Arm Bottom Cover Cap
Right Arm
X1 C08 Shoulder Horn
Right Arm
X1 C09 Shoulder Holder
Right Arm
X1 C10 Shoulder Bottom Cover
Right Arm
X1 C11 Shoulder Front Cover
Right Arm
X1 C12 Shoulder Front Cover Cap

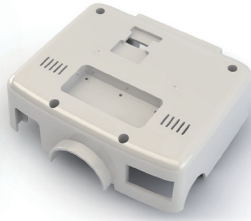


Body
X1 H01 Support Middle Bracket
Body
X1 H02 MID Side PCB



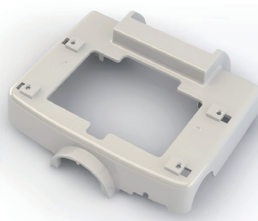
Body

X2 H03
Speaker



Body

X1 H04
Chest Cover



Body

X1 H05
Back Cover



Body

X1 H06
Tilting Module



Body

X1 H07
MID Case



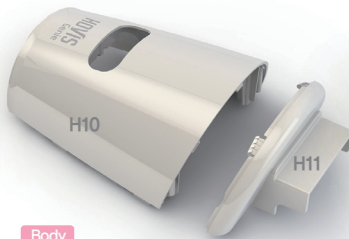
H09

H08

Body

X1 H08
IR Receiver Window

X1 H09
IR Receiver Holder



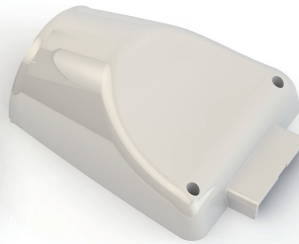
H10

H11

Body

X1 H10
Carrier bottom Cover

X1 H11
Carrier bottom Cover Sub



Body

X1 H12
Carrier Front Cover



X1 H13
Charge Station